

GRINNELL COLLEGE



2003
REPORT ON ADMISSION
AT GRINNELL COLLEGE

PREPARED BY

The Grinnell College Office of Admission

NOVEMBER, 2003

TABLE OF CONTENTS

Introduction	1-2
CHART I	Fall Semester Admission Statistics (Applied, Admitted, Matriculated), 1983-20033
CHART II	Early Decision Statistics, 1983-20034
CHART III	Regular Decision Statistics, 1983-2003.....5
CHART IV	First-Year, Regular Decision Statistics, 1993-2003.....6
CHART V	Transfer Statistics, 1993-2003.....7
CHART VI	Spring Semester Admission Statistics, 1983-20038
CHART VII	Male/Female Matriculants, 1983-20039
CHART VIII	Admission Statistics (Gender) for Fall Semester, 2003.....10
CHART IX	Secondary School Class Rank by Quintile, 1983-2003.....11
CHART X	Secondary School Class Rank, First-Year Class12
ILLUSTRATION A	Quality of First-Year Class by High School Rank13
CHART XI	Average SAT and ACT Results, First-Year Class14
CHART XII	SAT Score Distribution, First-Year Class 15-16
CHART XIII	ACT Score Distribution, First-Year Class17
ILLUSTRATION B	Yield and Composition of First-Year Class by Admission Rating,18
CHART XIV	Average SAT Results, All Matriculants, 1983-200319
CHART XV	Geographic Distribution by Home State (Applicants, Admits and Matriculants, 1998-2003) 20-21
ILLUSTRATION C	Distribution of Matriculants by Home State22
ILLUSTRATION D	Students Enrolled by Geographic Region (Home State).....23
CHART XVI	U.S. Students of Color, Enrollment History, 1993-200324
ILLUSTRATION E	Ethnic Composition of Entering Class25
CHART XVII	Secondary School Class Rank, First-Year Class, Multicultural26
CHART XVIII	Average SAT and ACT Results, First-Year Class, Multicultural27
CHART XIX	International Report, Fall 200328
CHART XX	Secondary School Class Rank, First-Year Class, International29

CHART XXI	Average TOEFL Results, First-Year Class, International.....	30
CHART XXII	Average SAT and ACT Results, First-Year Class, International	31
CHART XXIII	High School Type, by Gender, First-Year Class	32
ILLUSTRATION F	Enrollment by High School Type, First-Year Class	33
CHART XXIV	Waiting List Action, 1993-2003	34
CHART XXV	First-Choice Major, Entering Class, 1999-2003	35
CHART XXVI	Extracurricular Profile, First-Year Class	36

INTRODUCTION

As important as long-range planning and long-term effort are to each new student enrollment cycle, the bottom line each year is the entering class. At a given point in August each year, we meet our new Grinnell College class (in this case, the Class of 2007), measure their combined secondary school records, SAT and ACT scores, ethnicity, total number, etc., and then, as a community, pronounce it a successful or unsuccessful admission year. So, let's take a quick look at some of the key highlights of this new class, as well as the many charts enclosed, and you can determine for yourself if this was a successful admission year for the College:

1. Total applications: 3,058 (up slightly over 2002, up 8% in 5 years)
2. Completed applications: 2,410 (up more than 10% over 2002)
3. Early Decision applications: 119 (up 65% over 2002)
4. SAT median: 1370 (up overall over 2002, up 40 points for U.S. students)
5. Academic rank: 81% in top quintile, 98% in top 2 quintiles (better than in 2002)
6. Students honored by the National Merit Scholarship Corporation: 17% of the entering class
7. Advanced Placement (AP) Scholars: 5% of the entering class
8. Iowa is the most represented state: 14% (up over 2002)
9. Gender: 47% men, 53% women (improved balance over 2002)
10. 73% of the new class graduated from public secondary schools
11. Co-curricular profile:
 - a. Community service: over 75% of the entering class
 - b. Music: 49%
 - c. Varsity athletics: 47%
 - d. National Honor Society: 38%
 - e. Theatre, dance and art: 28%
12. International students: 10.5% (43)
13. U.S. students of color: 17% (71) (up over 2002)
 - a. African-American: 4.5% (19)
 - b. Latino/Latina: 5% (21)
 - c. Asian-American: 6% (25)
 - d. Native-American: 1.4% (6)
14. Decreased net tuition revenue compared to 2002

Here are some additional comments and pieces of information that will interest you and be of use to you:

1. Although we took an important step this year toward a better student body with more American students of color, it was just that, one step. We still lack the ethnic student diversity required to be one of the very best colleges or universities in the world.
2. The quality and quantity of our new class is more expensive than anticipated, requiring more financial aid and merit scholarships and generating less net tuition revenue.
3. We enrolled our first Posse Foundation class (12 students). All are from the Los Angeles Unified School District, and eleven are students of color. Professor Howard Burkle serves as their Mentor.

4. Admission and Financial Aid staff: Grinnell College graduates Jamie (Snider) Rehmann and James Onwuachi left the admission staff in late summer. Both did good work for the College, are devoted to their alma mater and liked their work here; however, their personal situations changed sufficiently to require they leave Grinnell.

Fortunately, two well-prepared Grinnell alumni have been hired as replacements. Adrienne Enríquez, Class of 1998, comes to us from directing a community-based after-school program in her native Portland and is the new Assistant Dean and Coordinator of Multicultural Admission. Adrienne earned majors in mathematics and sociology at Grinnell, an M.A. at the University of Miami, and served in California for two years with Teach for America.

Kate Herold, Class of 2001, is our new Admission Counselor, following considerable experience with Planned Parenthood in Illinois and Iowa. Kate earned her Grinnell College B.A. in English. The rest of the admission administrative staff continues intact and receives strong leadership from Tami Hrasky, Senior Associate Dean, and the number two administrator in the Office of Admission.

Pam Sittig has been promoted to Assistant Director of Student Financial Aid. With considerable financial aid experience at Grinnell and elsewhere, and an advanced degree, Pam is especially well-prepared for this promotion.

Connie Newport still serves as the Administrative Assistant in admission and deserves a special thank you for expertly preparing all of the detailed and informative charts herein.

5. In addition to the good data in this report, both the admission website and Dean Swartz' website (see the year end report of the Student-Faculty Committee on Admission and Financial Aid) contain information of interest to you. If you would like a hard copy of this report, please contact me (e-mail or directly by telephone at extension 3618) and I will send you one.
6. I greatly appreciate the more than 50% of our professors and 25% of our support and administrative staffs who overtly helped the new student enrollment effort this past year. The Student-Faculty Committee on Admission and Financial Aid and the Board on Admission both provided a great deal of advice and decision-making as well. Thanks especially to professors Ketter, Vetter, Cunningham, Montgomery, Swartz, Ellis, Cummins (Joe) and Patch.

Finally, I remain interested in and receptive to your feedback, opinions, comments, guidance and advice regarding Grinnell College's financial aid and admission programs.

Jim Sumner

**CHART I
FALL SEMESTER ADMISSION STATISTICS
(APPLIED, ADMITTED, MATRICULATED)
1983-2003**

	Applied	Admitted	% Admitted	Matriculated	% Matriculated
1983	1281	1011	78.9%	366	36.2%
1984	1209	1009	83.5%	433	42.9%
1985	1343	1036	77.1%	426	41.1%
1986	1773	1028	58.0%	381	37.1%
1987	1813	1101	60.7%	359	32.6%
1988	1955	1121	57.3%	386	34.4%
1989	1881	1238	65.8%	399	32.2%
1990	1755	1184	67.5%	386	32.6%
1991	1717	1056	61.5%	373	35.3%
1992	2015	1225	60.8%	348	28.4%
1993	2212	1510	68.3%	489	32.4%
1994	2299	1250	54.4%	369	29.5%
1995	2170	1463	67.4%	367	25.1%
1996	2120	1397	65.9%	393	28.1%
1997	2918	1472	50.4%	465	31.6%
1998	2832	1231	43.5%	380	30.9%
1999	2476	1239	50.0%	356	28.7%
2000	2886	1303	45.1%	391	30.0%
2001	2960	1362	46.0%	401	29.4%
2002	3042	1405	46.2%	398	28.3%
2003	3058	1482	48.5%	418	28.2%

Applied and Admitted totals include seventeen (17) deferrals to Fall 2004
and three (3) special exchange students.

CHART II
EARLY DECISION, FALL SEMESTERS, 1983-2003

	APPLIED	ADMITTED	% ADMITTED	MATRICULATED	% MATRICULATED
1983	113	95	84.1%	73	76.8%
1984	105	92	87.6%	71	77.2%
1985	100	83	83.0%	64	77.1%
1986	186	134	72.0%	107	79.9%
1987	182	117	64.3%	77	65.8%
1988	163	113	69.3%	84	74.3%
1989	138	91	65.9%	65	71.4%
1990	172	132	76.7%	104	78.8%
1991	151	121	80.1%	92	76.0%
1992	138	108	78.3%	82	75.9%
1993	147	108	73.5%	78	72.2%
1994	142	103	72.5%	77	74.8%
1995	105	76	72.4%	66	86.8%
1996	71	53	74.6%	45	84.9%
1997	89	59	66.3%	51	86.4%
1998	91	64	70.3%	60	93.8%
1999	88	41	46.6%	35	85.4%
2000	78	49	62.8%	45	91.8%
2001	66	43	65.2%	39	90.7%
2002	72	57	79.2%	53	93.0%
2003	119	94	79.0%	88	93.6%

CHART III
REGULAR DECISION, FALL SEMESTERS, 1983-2003
ALL NEW STUDENTS - FIRST-YEAR AND TRANSFER

	APPLIED	ADMITTED	% ADMITTED	MATRICULATED	% MATRICULATED
1983	1168	916	78.4%	293	32.0%
1984	1104	917	83.1%	362	39.5%
1985	1243	953	76.7%	362	38.0%
1986	1587	894	56.3%	274	30.6%
1987	1631	984	60.3%	282	28.7%
1988	1792	1008	56.3%	302	30.0%
1989	1743	1147	65.8%	334	29.1%
1990	1583	1052	66.5%	282	26.8%
1991	1566	935	59.7%	281	30.1%
1992	1877	1117	59.5%	266	23.8%
1993	2065	1402	67.9%	408	29.1%
1994	2157	1147	53.2%	292	25.5%
1995	2065	1387	67.2%	301	21.7%
1996	2049	1344	65.6%	348	25.9%
1997	2829	1413	49.9%	414	29.3%
1998	2754	1167	42.4%	320	27.4%
1999	2412	1198	49.7%	321	26.8%
2000	2808	1254	44.7%	346	27.6%
2001	2894	1319	45.6%	362	27.4%
2002	2970	1348	45.4%	345	25.6%
2003	2939	1388	47.2%	330	23.8%

Applied and Admitted totals include seventeen (17) deferrals to Fall 2004.

**CHART IV
FIRST-YEAR STATISTICS - REGULAR DECISION
FALL SEMESTERS, 1993-2003**

	APPLIED	ADMITTED	% ADMITTED	MATRICULATED	% MATRICULATED
1993	2039	1389	68.1%	432	31.1%
1994	2127	1186	55.8%	340	28.7%
1995	1901	1270	66.8%	246	19.4%
1996	1893	1270	67.1%	317	25.0%
1997	2619	1337	51.1%	380	28.4%
1998	2552	1108	43.4%	292	26.4%
1999	2217	1134	51.2%	290	25.6%
2000	2589	1200	46.3%	346	28.8%
2001	2635	1238	47.0%	321	25.9%
2002	2706	1279	47.3%	316	24.7%
2003	2730	1349	49.4%	317	23.5%

Applied and Admitted totals include seventeen (17) deferrals to Fall 2004.

CHART V
TRANSFER STATISTICS, FALL SEMESTERS, 1993-2003

	APPLIED	ADMITTED	% ADMITTED	MATRICULATED	% MATRICULATED
1993	173	121	69.9%	51	42.1%
1994	169	61	36.1%	27	44.3%
1995	164	117	71.3%	55	47.0%
1996	156	74	47.4%	31	41.9%
1997	212	78	36.8%	36	46.2%
1998	193	51	26.4%	23	45.1%
1999	195	64	32.8%	31	48.4%
2000	219	54	24.7%	26	48.1%
2001	259	81	31.3%	41	50.6%
2002	264	69	26.1%	29	42.0%
2003	209	39	18.7%	13	33.3%

CHART VI
SPRING ADMISSION STATISTICS, 1983-2003

	APPLIED	ADMITTED	% ADMITTED	MATRICULATED	% MATRICULATED
1983	28	22	78.6%	20	90.9%
1984	27	20	74.1%	18	90.0%
1985	25	18	72.0%	14	77.8%
1986	19	7	36.8%	6	85.7%
1987	23	16	69.6%	12	75.0%
1988	19	14	73.7%	10	71.4%
1989	18	2	11.1%	2	100.0%
1990	12	2	16.7%	2	100.0%
1991	34	26	76.5%	17	65.4%
1992	19	8	42.1%	7	87.5%
1993	53	41	77.4%	18	43.9%
1994	13	2	15.4%	2	100.0%
1995	16	5	31.3%	4	80.0%
1996	16	10	62.5%	7	70.0%
1997	26	7	26.9%	6	85.7%
1998	35	10	28.6%	6	60.0%
1999	11	7	63.6%	3	42.9%
2000	21	6	28.6%	5	83.3%
2001	28	8	28.6%	5	62.5%
2002	31	15	48.4%	8	53.3%
2003	17	9	52.9%	7	77.8%

**CHART VII
TABLE OF MALE/FEMALE MATRICULANTS
FALL SEMESTERS, 1983-2003**

	MEN	% OF ENTERING CLASS	WOMEN	% OF ENTERING CLASS	TOTAL MATRICULATED
1983	174	47.5%	192	52.5%	366
1984	219	50.6%	214	49.4%	433
1985	204	47.9%	222	52.1%	426
1986	204	53.5%	177	46.5%	381
1987	196	54.6%	163	45.4%	359
1988	206	53.4%	180	46.6%	386
1989	190	47.6%	209	52.4%	399
1990	197	51.0%	189	49.0%	386
1991	159	42.6%	214	57.4%	373
1992	149	42.8%	199	57.2%	348
1993	235	48.1%	254	51.9%	489
1994	161	43.9%	206	56.1%	367
1995	170	46.3%	197	53.7%	367
1996	161	41.0%	232	59.0%	393
1997	200	43.0%	265	57.0%	465
1998	168	44.2%	212	55.8%	380
1999	172	48.3%	184	51.7%	356
2000	164	41.9%	227	58.1%	391
2001	189	47.1%	212	52.9%	401
2002	178	44.7%	220	55.3%	398
2003	195	46.7%	223	53.3%	418

Total matriculated includes three (3) special exchange students.

**CHART VIII
ADMISSION STATISTICS BY GENDER
FALL SEMESTER, 2003**

	Applied	Actionable	Admitted	% Admitted	Matriculated	% Matriculated	Deny	Withdrew	Incomplete	Admit/ Withdrew	Paid/ Withdrew
First-Year (Male)	1336	1073	646	60.2%	190	29.4%	406	75	209	440	12
First-Year (Female)	1513	1211	797	65.8%	215	27.0%	395	97	224	548	21
Transfer (Male)	109	63	17	27.0%	4	23.5%	46	12	34	11	2
Transfer (Female)	96	60	19	31.7%	6	31.6%	41	7	29	9	4
Transfer (Unknown)	0	0	0	0.0%	0	0.0%	0	0	0	0	0
Special Exch. (Male)	2	1	1	100.0%	1	100.0%	0	1	0	0	0
Special Exch. (Female)	2	2	2	100.0%	2	100.0%	0	0	0	0	0
TOTALS	3058	2410	1482	61.5%	418	28.2%	888	192	496	1008	39

Applied and Admitted totals include seventeen (17) deferrals to Fall 2004.

**CHART IX
SECONDARY SCHOOL CLASS RANK BY QUINTILE - ALL MATRICULANTS
FALL SEMESTERS, 1983-2003**

	I	%	II	%	III	%	IV	%	V	%	UNKNOWN	TOTAL
1983	257	75.6%	66	19.4%	12	3.5%	5	1.5%	0	0.0%	26	366
1984	313	80.5%	53	13.6%	16	4.1%	6	1.5%	1	0.3%	44	433
1985	289	73.4%	90	22.8%	10	2.5%	5	1.3%	0	0.0%	32	426
1986	269	79.4%	57	16.8%	6	1.8%	4	1.2%	3	0.9%	42	381
1987	271	86.9%	30	9.6%	9	2.9%	1	0.3%	1	0.3%	47	359
1988	289	83.0%	45	12.9%	10	2.9%	3	0.9%	1	0.3%	38	386
1989	281	82.4%	42	12.3%	15	4.4%	3	0.9%	0	0.0%	58	399
1990	256	78.0%	55	16.8%	13	3.9%	3	0.9%	1	0.3%	58	386
1991	248	79.0%	44	14.0%	16	5.1%	4	1.3%	2	0.6%	59	373
1992	242	85.5%	28	9.9%	9	3.2%	3	1.1%	1	0.4%	65	348
1993	340	84.8%	41	10.2%	13	3.2%	5	1.2%	2	0.5%	82	483
1994	267	86.1%	35	11.3%	6	2.0%	1	0.3%	1	0.3%	59	369
1995	237	80.6%	49	16.7%	5	1.7%	2	0.7%	1	0.3%	73	367
1996	259	82.5%	43	13.7%	12	3.8%	0	0.0%	0	0.0%	79	393
1997	311	86.4%	46	12.8%	2	0.5%	1	0.3%	0	0.0%	105	465
1998	275	86.2%	38	11.9%	4	1.3%	1	0.3%	1	0.3%	61	380
1999	231	79.9%	54	18.7%	4	1.4%	0	0.0%	0	0.0%	69	358
2000	252	85.7%	38	12.9%	3	1.0%	1	0.3%	0	0.0%	97	391
2001	240	83.3%	43	14.9%	3	1.0%	2	0.7%	0	0.0%	113	401
2002	215	81.7%	41	15.6%	4	1.5%	1	0.4%	2	0.8%	135	398
2003	247	81.3%	50	16.4%	7	2.3%	0	0.0%	0	0.0%	114	418

Percentages based on a total of 304 matriculants whose class rank was reported.

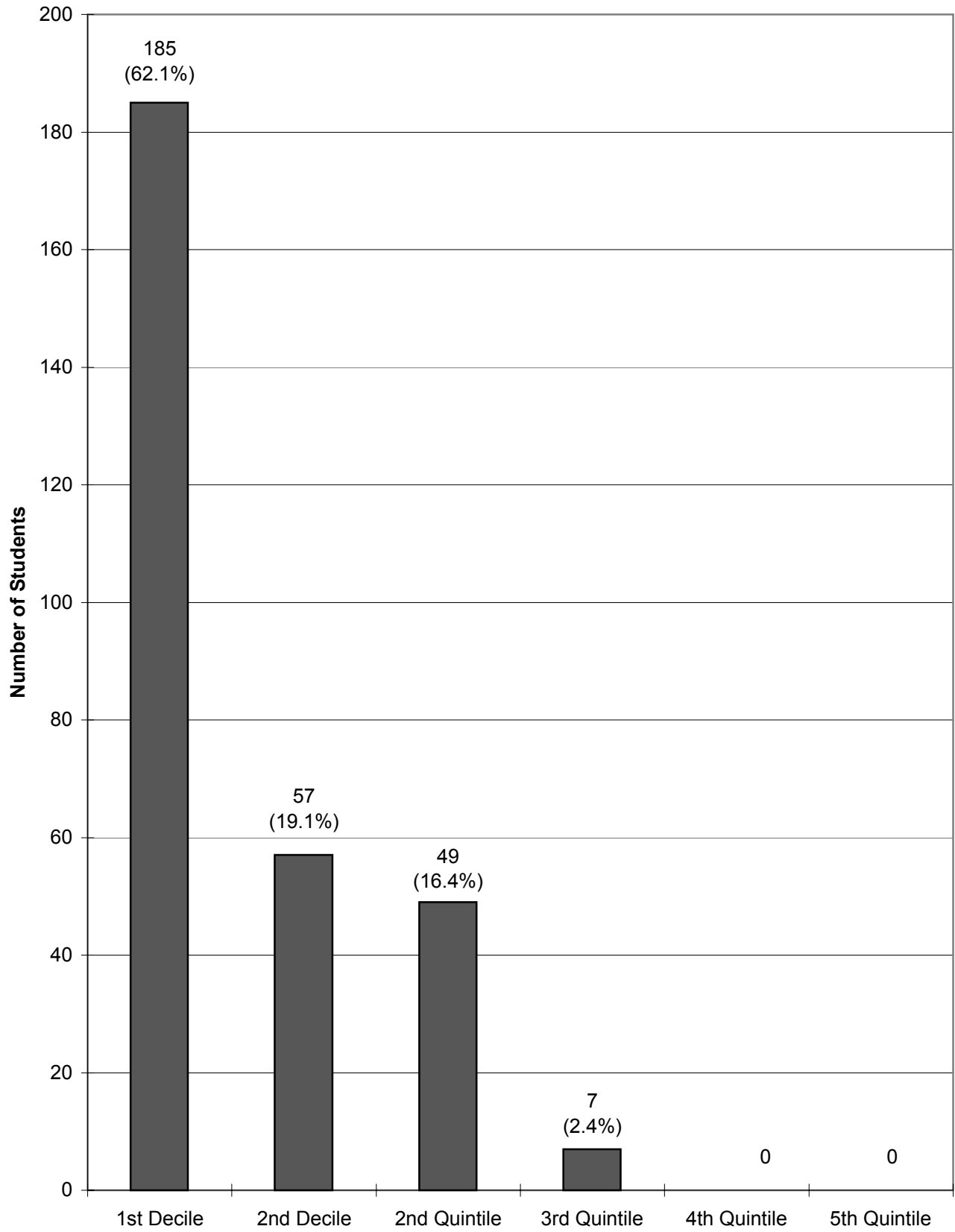
CHART X
FIRST-YEAR CLASS, FALL 2003
SECONDARY SCHOOL CLASS RANK - FIRST AND SECOND DECILES, SECOND THROUGH FIFTH QUINTILES

APPLIED (2849)	1ST DECILE		2ND DECILE		2ND QUINTILE		3RD QUINTILE		4TH QUINTILE		5TH QUINTILE	
	No.	%	No.	%	No.	%	No.	%	No.	%	No.	%
	FEMALE	470	59.7%	166	21.1%	119	15.1%	29	3.7%	1	0.1%	2
MALE	340	49.1%	143	20.7%	147	21.2%	44	6.4%	10	1.4%	8	1.2%
COMBINED	810	54.8%	309	20.9%	266	18.0%	73	4.9%	11	0.7%	10	0.7%
NOT RANKED=1370												

ADMITTED (1443)	1ST DECILE		2ND DECILE		2ND QUINTILE		3RD QUINTILE		4TH QUINTILE		5TH QUINTILE	
	No.	%	No.	%	No.	%	No.	%	No.	%	No.	%
	FEMALE	382	74.8%	86	16.8%	37	7.2%	4	0.8%	1	0.2%	1
MALE	267	63.6%	83	19.8%	61	14.5%	9	2.1%	0	0.0%	0	0.0%
COMBINED	649	69.7%	169	18.2%	98	10.5%	13	1.4%	1	0.1%	1	0.1%
NOT RANKED=512												

MATRICULATED (405)	1ST DECILE		2ND DECILE		2ND QUINTILE		3RD QUINTILE		4TH QUINTILE		5TH QUINTILE	
	No.	%	No.	%	No.	%	No.	%	No.	%	No.	%
	FEMALE	111	68.5%	29	17.9%	20	12.4%	2	1.2%	0	0.0%	0
MALE	74	54.4%	28	20.6%	29	21.3%	5	3.7%	0	0.0%	0	0.0%
COMBINED	185	62.1%	57	19.1%	49	16.4%	7	2.4%	0	0.0%	0	0.0%
NOT RANKED=107												

**ILLUSTRATION A
QUALITY OF FIRST-YEAR CLASS
BY HIGH SCHOOL RANK IN CLASS**



**CHART XI
FIRST-YEAR CLASS, FALL 2003
AVERAGE STANDARDIZED TEST RESULTS**

SCHOLASTIC ASSESSMENT TEST - SAT

	APPLIED			ADMITTED			MATRICULATED		
	Verbal	Math	Number	Verbal	Math	Number	Verbal	Math	Number
FEMALE	647	650	833	679	670	491	670	659	114
MALE	640	677	825	673	700	438	662	682	112
COMBINED	644	663	1658	676	684	929	666	670	226

AMERICAN COLLEGE TEST - ACT

	APPLIED		ADMITTED		MATRICULATED	
	COM	NUM	COM	NUM	COM	NUM
FEMALE	28.5	478	29.9	300	29.5	100
MALE	28.8	318	30	204	29.9	76
COMBINED	28.6	796	29.9	504	29.7	176

ACT KEY: COM=Composite, NUM=Number

CHART XII
FIRST-YEAR CLASS, FALL 2003
SAT SCORE DISTRIBUTION - VERBAL

RANGE	GENDER	APPLIED	ADMITTED	DENIED	MATRICULATED	PERCENT OF CLASS
	MALE	139	113	16	27	
750-800	FEMALE	147	120	12	20	
	COMBINED	286	233	28	47	20.8%
	MALE	115	76	29	17	
700-740	FEMALE	144	110	21	30	
	COMBINED	259	186	50	47	20.8%
	MALE	169	101	56	26	
650-690	FEMALE	162	106	39	30	
	COMBINED	331	207	95	56	24.8%
	MALE	154	72	65	19	
600-640	FEMALE	151	82	53	16	
	COMBINED	305	154	118	35	15.5%
	MALE	103	37	56	12	
550-590	FEMALE	110	40	64	7	
	COMBINED	213	77	120	19	8.4%
	MALE	71	25	40	4	
500-540	FEMALE	57	23	31	6	
	COMBINED	128	48	71	10	4.4%
	MALE	44	7	35	3	
450-490	FEMALE	36	7	22	3	
	COMBINED	80	14	57	6	2.7%
	MALE	27	7	17	4	
400-440	FEMALE	16	2	13	1	
	COMBINED	43	9	30	5	2.2%
	MALE	3	0	2	0	
Below 400	FEMALE	10	1	8	1	
	COMBINED	13	1	10	1	0.4%

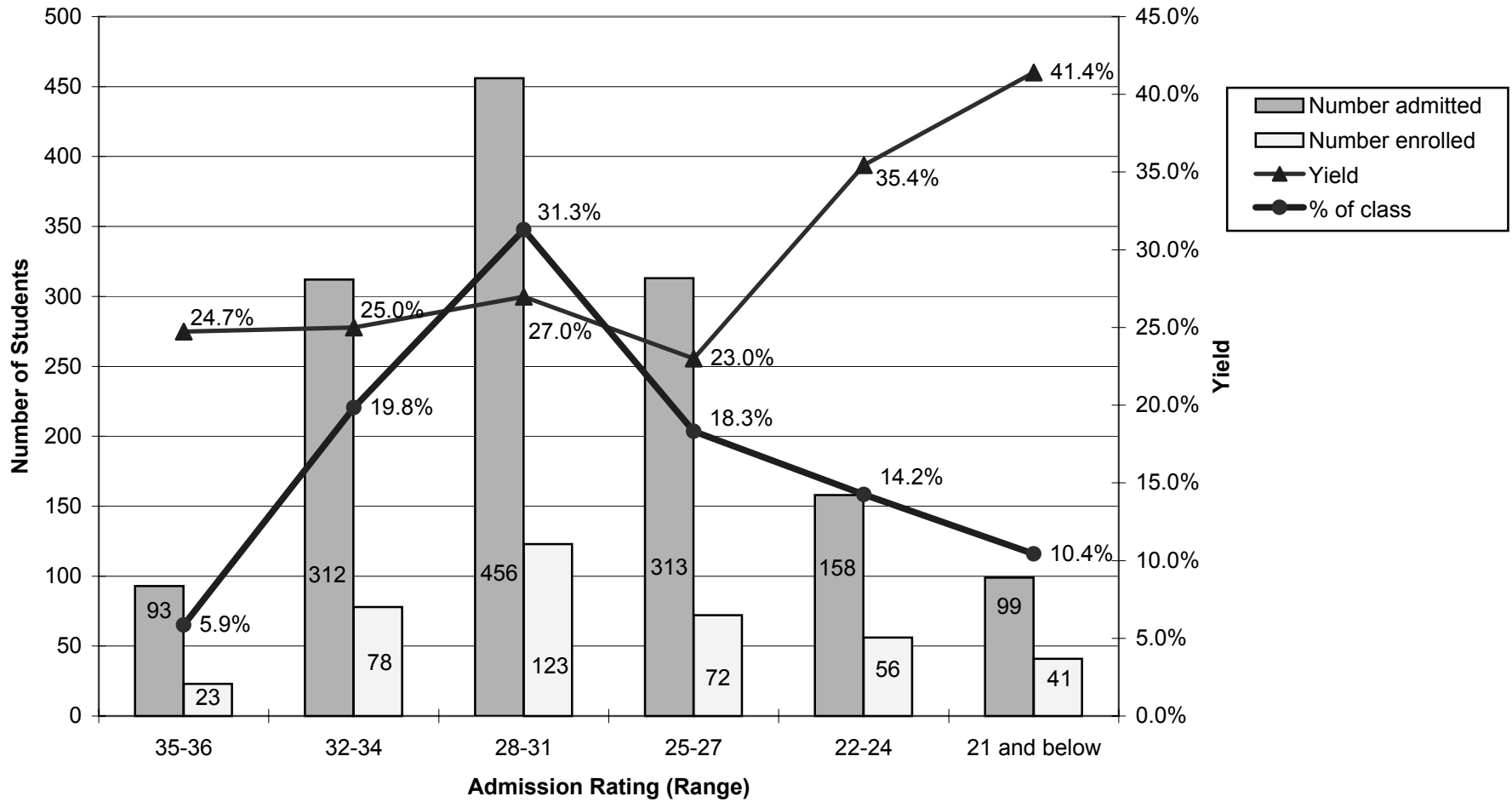
**CHART XII
FIRST-YEAR CLASS, FALL 2003
SAT SCORE DISTRIBUTION - MATH**

RANGE	GENDER	APPLIED	ADMITTED	DENIED	MATRICULATED	PERCENT OF CLASS
	MALE	177	125	38	22	
750-800	FEMALE	86	64	15	10	
	COMBINED	263	189	53	32	14.1%
	MALE	199	114	65	33	
700-740	FEMALE	163	113	33	31	
	COMBINED	362	227	98	64	28.3%
	MALE	201	116	75	26	
650-690	FEMALE	226	152	50	32	
	COMBINED	427	268	125	58	25.7%
	MALE	122	50	60	16	
600-640	FEMALE	162	100	52	21	
	COMBINED	284	150	112	37	16.4%
	MALE	66	22	38	9	
550-590	FEMALE	113	42	61	12	
	COMBINED	179	64	99	21	9.3%
	MALE	32	5	22	3	
500-540	FEMALE	51	16	27	4	
	COMBINED	83	21	49	7	3.1%
	MALE	13	5	7	2	
450-490	FEMALE	19	2	17	2	
	COMBINED	32	7	24	4	1.8%
	MALE	11	1	8	1	
400-440	FEMALE	8	2	4	2	
	COMBINED	19	3	12	3	1.3%
	MALE	4	0	3	0	
Below 400	FEMALE	5	0	4	0	
	COMBINED	9	0	7	0	0.0%

**CHART XIII
FIRST-YEAR CLASS, 2003
ACT SCORE DISTRIBUTION**

COMPOSITE	GENDER	APPLIED	ADMITTED	DENIED	MATRICULATED	PERCENT OF CLASS
	MALE	24	21	1	7	
34-36	FEMALE	39	33	5	8	
	COMBINED	63	54	6	15	8.5%
	MALE	59	46	7	22	
32-33	FEMALE	81	66	4	21	
	COMBINED	140	112	11	43	24.4%
	MALE	67	55	7	20	
30-31	FEMALE	102	84	8	30	
	COMBINED	169	139	15	50	28.4%
	MALE	61	38	15	9	
28-29	FEMALE	89	63	16	20	
	COMBINED	150	101	31	29	16.5%
	MALE	79	38	31	13	
24-27	FEMALE	107	39	46	13	
	COMBINED	186	77	77	26	14.8%
	MALE	23	6	10	5	
20-23	FEMALE	43	13	21	7	
	COMBINED	66	19	31	12	6.8%
	MALE	2	0	0	0	
17-19	FEMALE	14	2	9	1	
	COMBINED	16	2	9	1	0.6%
	MALE	3	0	2	0	
BELOW 16	FEMALE	3	0	1	0	
	COMBINED	6	0	3	0	0.0%

**ILLUSTRATION B
YIELD AND COMPOSITION OF FIRST-YEAR CLASS
BY ADMISSION RATING**



**CHART XIV
AVERAGE SAT RESULTS
ALL MATRICULANTS - FALL SEMESTERS, 1983-2003**

	SAT VERBAL	SAT MATH
1983	580	610
1984	580	610
1985	590	611
1986	601	632
1987	607	634
1988	611	646
1989	604	636
1990	602	634
1991	608	633
1992	596	634
1993	602	642
1994	606	653
1995	595	637
1996	673	646
1997	674	659
1998	674	664
1999	668	658
2000	673	660
2001	668	665
2002	675	660
2003	666	671

BEGINNING IN 1996, SAT I SCORES ARE
REPORTED ON THE RECENTERED SCALE

**CHART XV
DISTRIBUTION BY HOME STATE
APPLICANTS (A), ADMITS (AD) AND MATRICULANTS (M)**

	1998			1999			2000			2001			2002			2003		
	A	AD	M	A	AD	M	A	AD	M	A	AD	M	A	AD	M	A	AD	M
ALABAMA	11	4	1	8	3	2	11	2	1	6	5	2	14	5	0	7	3	1
ALASKA	4	3	1	6	4	1	5	3	1	4	3	1	6	4	0	5	2	1
ARIZONA	19	5	2	11	5	2	22	8	3	22	13	3	28	12	6	31	19	2
ARKANSAS	10	6	1	8	7	1	26	14	3	22	16	5	20	12	3	23	8	3
CALIFORNIA	183	82	18	145	79	15	168	79	17	137	72	12	169	80	20	192	112	39
COLORADO	60	28	10	67	38	11	54	37	20	61	32	6	63	39	10	63	36	9
CONNECTICUT	36	14	6	17	7	2	30	14	3	25	12	3	18	13	4	26	11	5
DELAWARE	5	2	0	3	1	0	2	1	0	3	3	1	3	3	1	0	0	0
WASH. , DC	23	7	3	7	1	0	22	9	0	20	7	4	14	7	2	15	5	1
FLORIDA	28	8	2	19	7	2	32	16	2	21	7	3	30	16	7	31	18	6
GEORGIA	20	9	2	13	8	0	19	13	3	25	13	5	21	9	3	18	9	1
GUAM	0	0	0	0	0	0	1	0	0	1	1	1	1	1	0	0	0	0
HAWAII	11	6	0	9	6	1	10	7	3	7	5	1	22	15	5	9	6	4
IDAHO	7	2	1	5	3	0	2	2	1	4	2	1	3	2	0	7	4	2
ILLINOIS	258	108	36	223	118	32	258	118	44	274	152	44	272	155	55	345	186	50
INDIANA	37	14	2	31	18	3	53	33	13	33	21	5	34	23	8	46	30	4
IOWA	201	94	55	204	120	50	241	114	48	237	124	62	208	111	41	227	116	57
KANSAS	43	18	5	41	23	7	40	20	7	55	33	11	53	32	16	43	23	12
KENTUCKY	15	7	2	10	6	1	7	4	0	8	4	2	12	9	1	11	6	1
LOUISIANA	9	3	1	6	3	1	7	4	1	14	6	3	10	2	1	10	5	1
MAINE	16	5	2	13	11	5	26	13	4	17	14	5	6	3	0	9	6	3
MARYLAND	41	15	5	31	18	8	50	30	10	42	19	6	41	27	8	42	22	6
MASSACHUSETTS	91	33	11	63	29	11	63	25	8	64	36	14	44	26	7	53	26	7
MICHIGAN	44	18	4	39	20	4	34	15	4	52	25	7	28	12	2	57	29	11
MINNESOTA	140	72	24	149	97	24	141	82	24	142	85	27	159	102	29	148	100	28
MISSISSIPPI	4	3	0	1	0	0	6	0	0	10	8	1	10	3	0	19	9	4

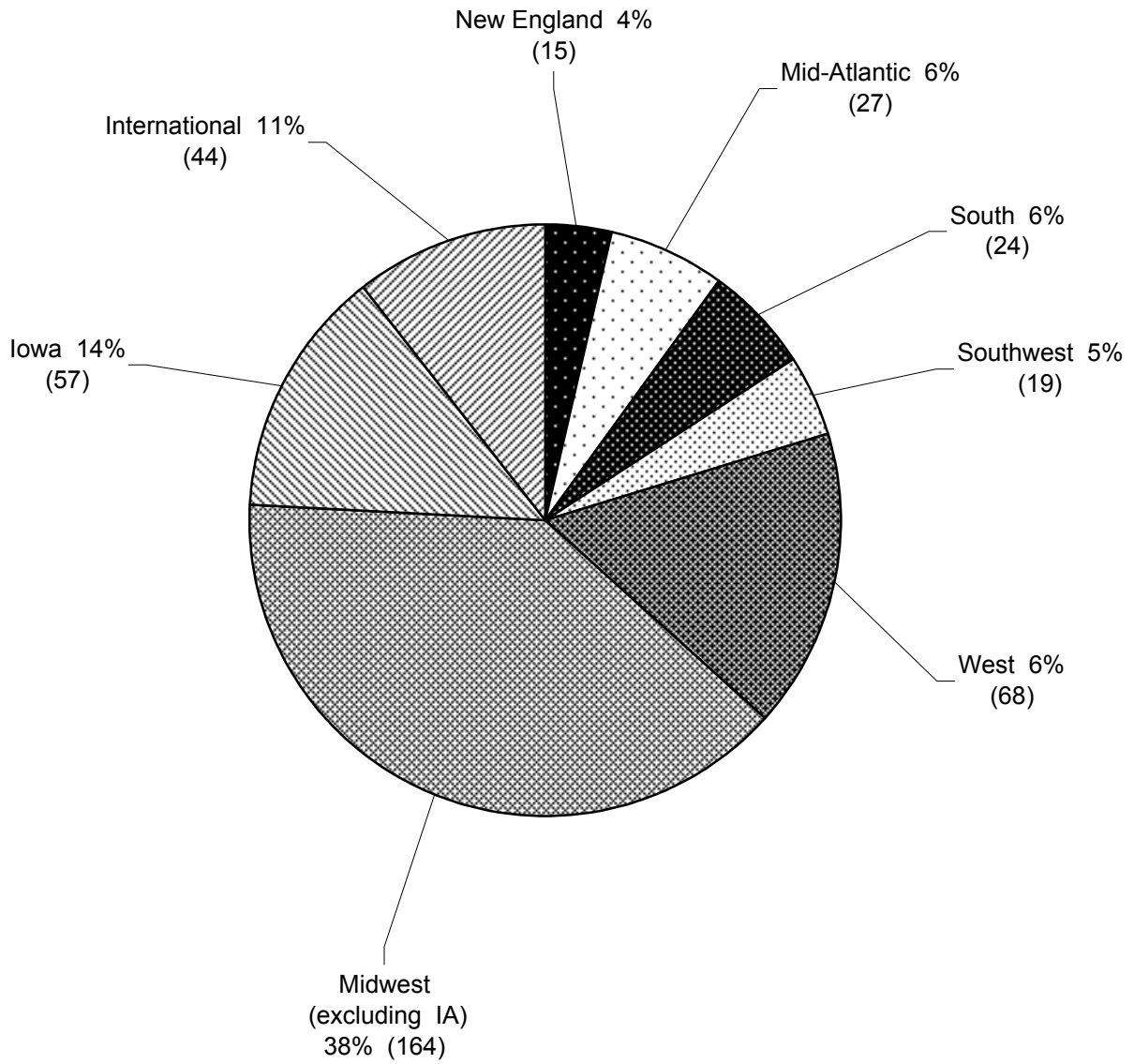
**CHART XV
DISTRIBUTION BY HOME STATE
APPLICANTS (A), ADMITS (AD) AND MATRICULANTS (M)**

CHART XI, PAGE 2	1998			1999			2000			2001			2002			2003		
	A	AD	M	A	AD	M	A	AD	M	A	AD	M	A	AD	M	A	AD	M
MISSOURI	76	33	14	65	38	13	78	49	15	65	33	7	87	58	12	75	47	12
MONTANA	8	6	3	9	6	2	2	2	1	6	4	0	2	1	0	5	1	0
NEBRASKA	43	26	9	38	21	3	30	14	4	31	12	3	26	13	5	24	15	5
NEVADA	3	2	0	8	6	3	6	3	1	5	3	2	3	1	0	4	4	2
NEW HAMPSHIRE	15	8	2	5	5	1	16	7	2	9	6	1	7	3	0	7	1	0
NEW JERSEY	38	13	4	27	13	4	40	17	5	25	12	3	37	20	6	29	21	7
NEW MEXICO	14	8	2	21	12	3	27	12	2	30	18	3	25	15	3	20	10	1
NEW YORK	136	67	21	93	48	14	109	59	17	93	57	13	99	54	20	95	60	9
NORTH CAROLINA	25	14	6	16	9	3	21	10	5	34	15	1	16	9	2	16	7	0
NORTH DAKOTA	6	5	1	5	3	0	8	4	1	4	1	0	6	5	1	3	2	1
OHIO	66	38	15	48	26	11	47	30	10	32	22	8	40	21	6	61	39	14
OKLAHOMA	17	8	4	13	8	3	15	8	3	13	7	1	11	5	1	9	5	3
OREGON	38	19	4	40	28	5	28	15	5	32	19	4	40	28	5	35	24	3
PENNSYLVANIA	44	22	10	43	23	5	40	21	6	46	21	7	29	14	5	38	19	4
PUERTO RICO	0	0	0	0	0	0	1	1	1	0	0	0	2	0	0	0	0	0
RHODE ISLAND	6	2	0	6	4	2	4	4	2	3	2	2	4	4	2	1	1	0
SOUTH CAROLINA	13	5	0	5	2	1	10	5	2	11	3	2	10	2	0	6	3	1
SOUTH DAKOTA	10	5	3	16	7	1	15	6	2	7	6	3	7	4	2	5	5	1
TENNESSEE	20	7	1	17	12	1	24	12	4	22	9	1	22	11	3	31	21	3
TEXAS	138	60	16	93	40	19	102	46	9	114	49	16	154	51	13	100	52	12
UTAH	8	5	0	12	7	4	22	10	1	18	10	2	15	9	3	11	7	2
VERMONT	4	0	0	6	3	1	7	5	2	6	4	0	8	5	4	3	1	0
VIRGIN ISLANDS	0	0	0	0	0	0	1	0	0	0	0	0	0	0	0	0	0	0
VIRGINIA	37	21	7	31	14	6	37	17	4	25	11	4	23	18	2	25	11	6
WASHINGTON	64	38	13	60	39	16	61	29	7	52	29	12	52	32	10	44	25	2
WEST VIRGINIA	3	2	1	6	5	3	5	4	2	3	2	1	1	1	1	6	5	2
WISCONSIN	106	53	24	71	45	9	88	45	17	69	44	14	80	49	20	87	56	24
WYOMING	6	4	0	2	1	1	5	4	0	8	4	1	3	1	1	7	4	2

ILLUSTRATION C
DISTRIBUTION OF MATRICULANTS BY HOME STATE



ILLUSTRATION D
STUDENTS ENROLLED BY GEOGRAPHIC REGION
(HOME STATE)



**CHART XVI
U.S. STUDENTS OF COLOR
ENROLLMENT HISTORY, 1993-2003**

	<i>Class size</i>	<i>U.S. Multicultural</i>	<i>Percent of Class</i>	<i>African-American</i>	<i>Percent of Class</i>	<i>Latino/a</i>	<i>Percent of Class</i>	<i>Asian-American</i>	<i>Percent of Class</i>	<i>Native American</i>	<i>Percent of Class</i>	<i>**Unknown ethnicity</i>	<i>Percent of Class</i>
1993	484	60	12.4%	21	4.3%	13	2.7%	20	4.1%	1	0.2%	5	1.0%
1994	367	55	15.0%	21	5.7%	13	3.5%	18	4.9%	3	0.8%	0	0.0%
1995	367	45	12.3%	13	3.5%	18	4.9%	9	2.5%	5	1.4%	0	0.0%
1996	393	50	12.7%	13	3.3%	18	4.6%	19	4.8%	0	0.0%	0	0.0%
1997	451	50	11.1%	7	1.6%	22	4.9%	18	4.0%	3	0.7%	2	0.4%
1998	380	44	11.6%	11	2.9%	14	3.7%	19	5.0%	0	0.0%	32	8.4%
1999	356	54	15.2%	11	3.1%	22	6.2%	19	5.3%	2	0.6%	28	7.9%
2000	391	50	12.8%	18	4.6%	15	3.8%	15	3.8%	2	0.5%	43	11.0%
2001	401	53	13.2%	19	4.7%	13	3.2%	17	4.2%	4	1.0%	39	9.7%
2002	398	38	9.5%	7	1.8%	10	2.5%	19	4.8%	2	0.5%	39	9.8%
2003	418	71	17.0%	19	4.5%	21	5.0%	25	6.0%	6	1.4%	13	3.1%

**Beginning in 1998, there was a change in how this category was reported.

ILLUSTRATION E
ETHNIC COMPOSITION OF ENTERING CLASS

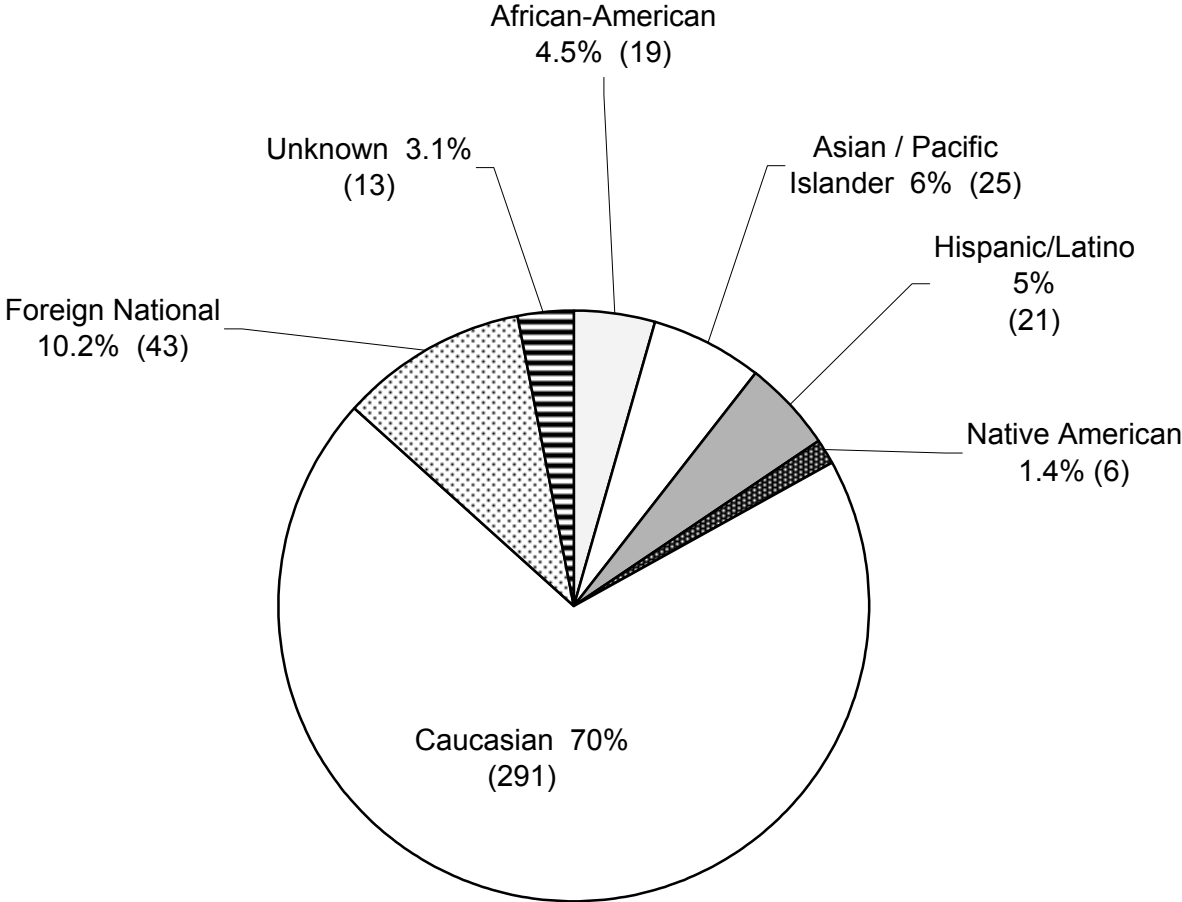


CHART XVII
FIRST-YEAR CLASS, 2003 - MULTICULTURAL (excludes students who did not self identify)
SECONDARY SCHOOL CLASS RANK - FIRST AND SECOND DECILES, SECOND THROUGH FIFTH QUINTILES

APPLIED (504)												
	1ST DECILE		2ND DECILE		2ND QUINTILE		3RD QUINTILE		4TH QUINTILE		5TH QUINTILE	
	No.	%	No.	%	No.	%	No.	%	No.	%	No.	%
FEMALE	77	50.7%	33	21.7%	28	18.4%	14	9.2%	0	0.0%	0	0.0%
MALE	44	34.9%	29	23.0%	37	29.4%	13	10.3%	1	0.8%	2	1.6%
COMBINED	121	43.5%	62	22.3%	65	23.4%	27	9.7%	1	0.4%	2	0.7%
NOT RANKED=226												

ADMITTED (249)												
	1ST DECILE		2ND DECILE		2ND QUINTILE		3RD QUINTILE		4TH QUINTILE		5TH QUINTILE	
	No.	%	No.	%	No.	%	No.	%	No.	%	No.	%
FEMALE	61	66.3%	19	20.6%	10	10.9%	2	2.2%	0	0.0%	0	0.0%
MALE	40	50.0%	20	25.0%	14	17.5%	6	7.5%	0	0.0%	0	0.0%
COMBINED	101	58.7%	39	22.6%	24	14.0%	8	4.7%	0	0.0%	0	0.0%
NOT RANKED=77												

MATRICULATED (70)												
	1ST DECILE		2ND DECILE		2ND QUINTILE		3RD QUINTILE		4TH QUINTILE		5TH QUINTILE	
	No.	%	No.	%	No.	%	No.	%	No.	%	No.	%
FEMALE	16	55.2%	6	20.7%	6	20.7%	1	3.4%	0	0.0%	0	0.0%
MALE	9	34.6%	7	26.9%	8	30.8%	2	7.7%	0	0.0%	0	0.0%
COMBINED	25	45.5%	13	23.6%	14	25.5%	3	5.4%	0	0.0%	0	0.0%
NOT RANKED=15												

CHART XVIII
FIRST-YEAR CLASS, 2003 - MULTICULTURAL
(excludes students who did not self identify)
AVERAGE STANDARDIZED TEST RESULTS

SAT

	APPLIED			ADMITTED			MATRICULATED		
	Verbal	Math	Number	Verbal	Math	Number	Verbal	Math	Number
FEMALE	627	606	131	651	624	91	622	581	19
MALE	607	627	126	630	653	80	618	648	24
COMBINED	617	617	257	641	638	171	620	618	43

ACT

	APPLIED		ADMITTED		MATRICULATED	
	COM	NUM	COM	NUM	COM	NUM
FEMALE	24.6	88	26.5	44	25.9	14
MALE	25.7	57	27.8	33	27.3	12
COMBINED	25.0	145	27.1	77	26.5	26

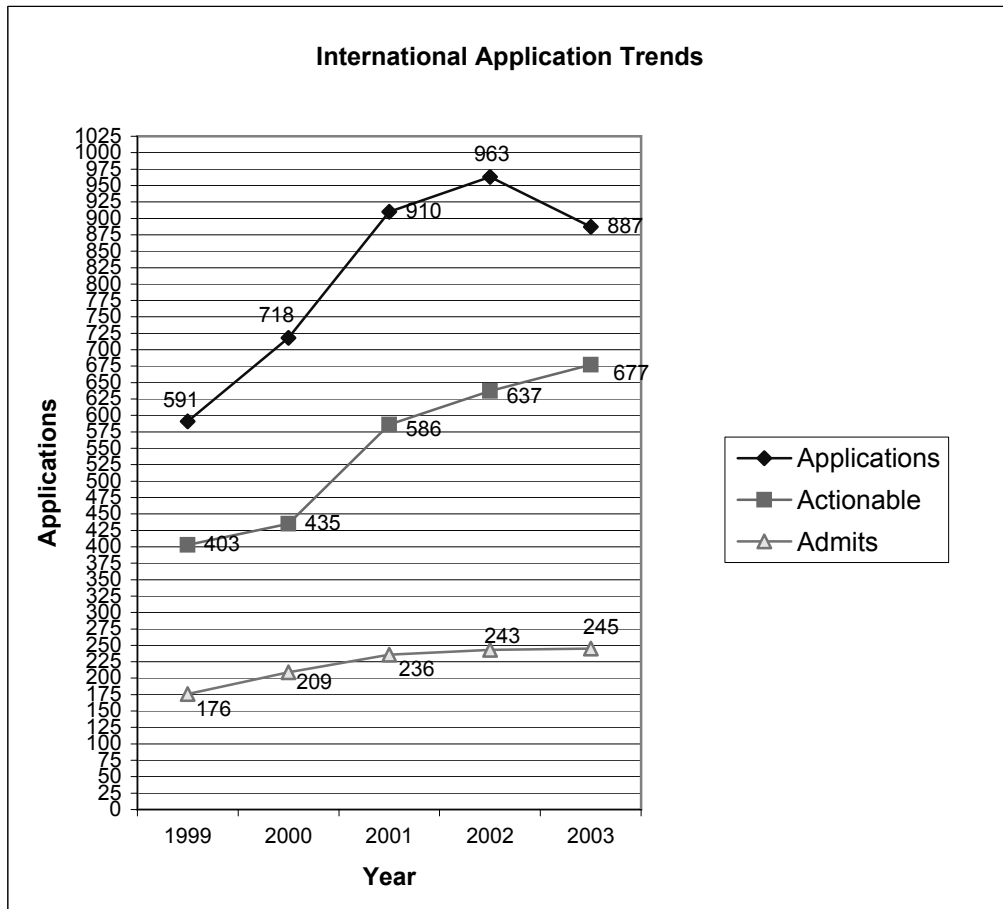
ACT KEY: COM=Composite, NUM=Number

CHART XIX INTERNATIONAL REPORT

Includes only students who are citizens of other countries.
U.S. permanent residents and dual citizens are not included.

Year	Inquiries	Applications	Actionable	Admits	Matriculants
1999	2241	591	403	176	38
2000	2572	718	435	209	43
2001	3284	910	586	236	62
2002	3811	963	637	243	50
2003	4309	887	677	245	43

Applied and Admitted totals include two (2) deferrals to Fall 2004.



43 new international students enrolled, including 3 exchange students, from the following 24 countries: Bangladesh, Belize, Bulgaria, China, Costa Rica, Cyprus, Egypt, France, Ghana, Hong Kong, India, Kenya, Korea, Macedonia, Malaysia, Mexico, Nepal, Pakistan, Panama, Russia, Thailand, Turkey Vietnam, and Zimbabwe

CHART XX
FIRST-YEAR CLASS, 2003 - INTERNATIONAL
SECONDARY SCHOOL CLASS RANK

APPLIED QUINTILES (773)					
	I	II	III	IV	V
FEMALE	102	10	0	1	0
MALE	136	18	8	3	3
COMBINED	238 (85%)	28 (10%)	8 (3%)	4 (1%)	3 (1%)
NOT RANKED=492					

ADMITTED QUINTILES (221)					
	I	II	III	IV	V
FEMALE	36	4	0	1	0
MALE	63	2	1	0	0
COMBINED	99 (92%)	6 (6%)	1 (1%)	1 (1%)	0 (0%)
NOT RANKED=114					

MATRICULATED QUINTILES (37)					
	I	II	III	IV	V
FEMALE	8	1	0	0	0
MALE	9	1	1	0	0
COMBINED	17 (85%)	2 (10%)	1 (5%)	0 (0%)	0 (0%)
NOT RANKED=17					

**CHART XXI
CLASS OF 2003 - INTERNATIONAL
AVERAGE TEST RESULTS**

TEST OF ENGLISH AS A FOREIGN LANGUAGE (TOEFL)

	APPLIED		ADMITTED		MATRICULATED	
	TOEFL	Number	TOEFL	Number	TOEFL	Number
FEMALE	262	260	270	78	269	14
MALE	266	296	272	93	263	16
COMBINED	264	556	271	171	266	30
NOT INCLUDED		331		74		13

All TOEFL scores have been converted to the
computer-based scale.

**CHART XXII
FIRST-YEAR CLASS, 2003 - INTERNATIONAL
AVERAGE STANDARDIZED TEST RESULTS**

SAT

	APPLIED			ADMITTED			MATRICULATED		
	Verbal	Math	Number	Verbal	Math	Number	Verbal	Math	Number
FEMALE	584	662	254	615	706	88	604	724	14
MALE	592	693	325	627	734	115	558	700	18
COMBINED	588	680	579	622	722	203	578	711	32

ACT

	APPLIED		ADMITTED		MATRICULATED	
	COM	NUM	COM	NUM	COM	NUM
FEMALE	27.2	9	27.3	4	22.5	2
MALE	27.9	10	28.6	5	23.0	1
COMBINED	27.6	19	28.0	9	22.7	3

ACT KEY: COM=Composite, NUM=Number

**CHART XXIII
FIRST-YEAR CLASS, 2003
PUBLIC AND NON-PUBLIC SCHOOLS**

		APPLIED	ADMITTED	% ADMITTED	MATRICULATED	%MATRICULATED
FEMALE	PUBLIC	922	525	56.9%	162	30.9%
	NON-PUBLIC	591	272	46.0%	53	19.5%
	Total	1513	797		215	

		APPLIED	ADMITTED	% ADMITTED	MATRICULATED	%MATRICULATED
MALE	PUBLIC	688	387	56.3%	132	34.1%
	NON-PUBLIC	648	259	40.0%	58	22.4%
	Total	1336	646		190	

		APPLIED	ADMITTED	% ADMITTED	MATRICULATED	%MATRICULATED
COMBINED	PUBLIC	1610	912	56.6%	294	32.2%
	NON-PUBLIC	1239	531	42.9%	111	20.9%
	Total	2849	1443		405	

**ILLUSTRATION F
ENROLLMENT BY HIGH SCHOOL TYPE
FIRST-YEAR CLASS**

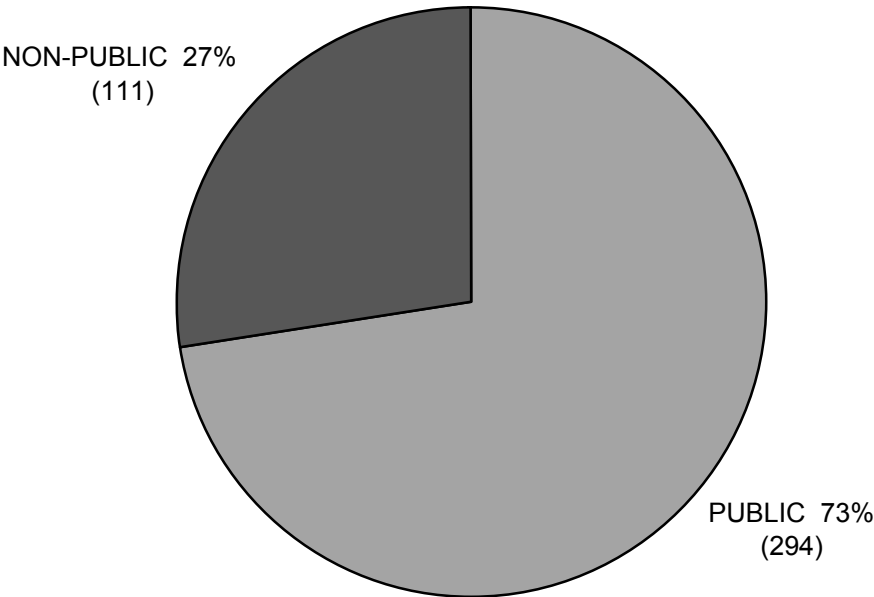


CHART XXIV
WAITING LIST STATISTICS - FALL SEMESTERS, 1993-2003

	NO. PLACED ON WAITING LIST	ADMITTED	% ADMITTED	MATRICULATED	% MATRICULATED
1993	174	40	23.0%	12	30.0%
1994	215	2	0.9%	1	50.0%
1995	167	68	40.7%	26	38.2%
1996	128	32	25.0%	14	43.8%
1997	195	4	2.1%	0	0.0%
1998	249	14	5.6%	4	28.6%
1999	144	45	31.3%	11	24.4%
2000	222	64	28.8%	31	48.4%
2001	152	68	44.7%	29	42.6%
2002	146	28	19.2%	11	39.3%
2003	244	1	0.4%	1	100.0%

CHART XXV
FIRST-CHOICE MAJOR, 1999-2003
Top seven disciplines

1999 (class of 356)		2000 (class of 391)		2001 (class of 401)		2002 (class of 398)		2003 (class of 418)	
Biology	62	English	54	Biology	50	English	50	Biology	49
English	42	Biology	50	English	40	Biology	44	English	38
Political Science	27	Psychology	34	Computer Studies	31	Political Science	31	History	27
Psychology	27	History	32	History	27	History	30	Political Science	23
Economics	21	Computer Studies	26	Political Science	25	Economics	18	Psychology	19
Chemistry	18	Math	18	Psychology	25	Psychology	18	Economics/Math	16
Philosophy	18	Physics/Political Science	13	Economics	20	Physics/Philosophy	16	Computer Science	15

CHART XXVI
Extracurricular Profile of the Class of 2007

